



# 29ER US NATIONAL CHAMPIONSHIP



July 26 to 28, 2017

Alamitos Bay Yacht Club  
Long Beach, California, USA

## SAILING INSTRUCTIONS

The organizing authority is the Alamitos Bay Yacht Club, Long Beach CA.

*The notation '[DP]' in a rule in the SIs means that the penalty for a breach of that rule may, at the discretion of the protest committee, be less than disqualification.*

### 1. RULES

- 1.1. The regatta will be governed by the rules as defined in *The Racing Rules of Sailing*.
- 1.2. The following prescriptions of US national authority will apply: Prescriptions to RRS 61.4, 67 and 76.1, which are stated in full below:
  - 1.2.1. RRS 61.4 – Fees for Protests and Requests for Redress – US Sailing prescribes that no fees shall be charged for protests or requests for redress.
  - 1.2.2. RRS 67 – Damages – US Sailing prescribes that:
    - (a) A boat that retires from a race or accepts a penalty does not by that action alone admit liability for damages.
    - (b) A protest committee shall find facts and make decisions only in compliance with the rules. No protest committee or US Sailing Appeals authority shall adjudicate any claim for damages. Such a claim is subject to the jurisdiction of the courts.
    - (c) A basic purpose of the rules is to prevent contact between boats. By participating in an event governed by the rules, a boat agrees that responsibility for damages arising from any breach of the rules shall be based on fault as determined by application of the rules, and that she shall not be governed by the legal doctrine of “assumption of risk” for monetary damages resulting from contact with other boats.
  - 1.2.3. RRS 76.1 – Exclusion of Boats or Competitors – US Sailing prescribes that an organizing authority or race committee shall not reject or cancel the entry of a boat or exclude a competitor eligible under the Notice of Race and Sailing Instructions for an arbitrary or capricious reason, or for the reason of race, color, national origin, gender, sexual orientation, or age.
- 1.3. RRS G3 CHARTERED OR LOANED BOATS will be in effect. A boat chartered or loaned for an event may carry national letters or a sail number in contravention of her class rules.

### 2. ADDITIONAL IDENTIFICATION

While racing each boat shall display a colored ribbon or a colored placard corresponding to the fleet to which she has been assigned and attached to mast top or inserted in mainsail pocket. Ribbons and placards and instructions for attachment will be available from the race office. [DP]



## 29ER US NATIONAL CHAMPIONSHIP



### 3. NOTICES TO COMPETITORS

- 3.1. Notices to competitors will be posted on the official notice board located at the Alamitos Bay Yacht Club on the Glass Wall facing the boat basin. Except for notices of protests, all official regatta notices will be posted here. In addition, the race committee will attempt to post competitor Notices on the event website at [www.29erworlds.org/event/notice-board](http://www.29erworlds.org/event/notice-board).
- 3.2. Notices of protests will be posted on the protest notice board located inside the main clubhouse entrance.

### 4. CHANGES TO SAILING INSTRUCTIONS

Any change to the sailing instructions will be posted before 1000 on the day it will take effect, except that any change to the schedule of races will be posted no later than one (1) hour after the close of the protest filing time on the day before it will take effect.

### 5. SIGNALS MADE ASHORE

- 5.1. Signals made ashore will be displayed from the flagpole of Alamitos Bay Yacht Club.
- 5.2. When flag AP is displayed ashore. '1 minute' is replaced with 'not less than 60 minutes' in the race signal AP. This changes RRS Race Signals, AP.
- 5.3. Flag D with one sound means: 'The warning signal will be made not less than 60 minutes after flag D is displayed'. Boats shall not leave their allocated berths until this signal is made for their fleet. [DP]

### 6. FORMAT OF RACING

The regatta will consist of a qualifying series and a final series.

#### 6.1. Qualifying Series:

- (a) For the qualifying series boats will be assigned to fleets Yellow, Blue of, as nearly as possible, equal size and ability. Fleet assignments will be made by a seeding committee appointed by the organizing authority, and posted by 0830 on the first day of racing.

#### 6.2. Final Series:

- (a) Boats will be assigned to final series fleets Gold and Silver, on the basis of their ranks in the qualifying series. The Gold and Silver fleets will be of equal size. If the total number of boats to be assigned to these fleets is not evenly divisible, the first extra position will be assigned to the Gold fleet.
- (b) Any recalculation of qualifying series ranking after boats have been assigned to final series fleets will not affect the assignments except that a redress decision may promote a boat to a higher fleet.



# 29ER US NATIONAL CHAMPIONSHIP



## 7. SCHEDULE OF RACES

7.1.

Social and Meeting Schedule		
Wednesday 26 <sup>th</sup> July	0900	Coaches Meeting with the OA
	0930	Competitors' Meeting
	After Racing	Power Snack
		Competitor Debrief
Thursday 27 <sup>th</sup> July	0930	Competitors' Meeting
	After Racing	Power Snack
		Competitor Debrief
Friday 28 <sup>th</sup> July	0930	Competitors' Meeting
	After Racing	Power Snack
		Prize Giving

7.2.

Racing Schedule	
Wednesday 26 <sup>th</sup> July	Qualifying series – 3 races
Thursday 27 <sup>th</sup> July	Final series – 4 races
Friday 28 <sup>th</sup> July	Final series – 3 races

- 7.3. One extra race per day may be sailed, provided that the event becomes no more than one race ahead of schedule and the change is according to SI 3.
- 7.4. The scheduled time of the warning signal for the first race each day is 1155.
- 7.5. To alert boats that a race or sequence of races will begin soon, an orange flag will be displayed with one sound for at least four minutes before a warning signal is displayed.
- 7.6. On Friday 28th July, the first Warning Signal for a race will not be made after 1700.

## 8. CLASS FLAGS

- 8.1. Class flags will be a colored flags, as follows:
 

Qualifying fleets	Final fleets	Color
Yellow	Gold	Yellow
Blue	Silver	Blue

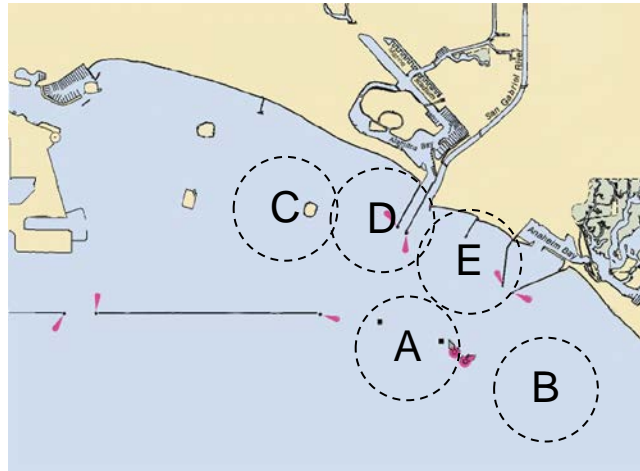


## 29ER US NATIONAL CHAMPIONSHIP



### 9. RACING AREAS

- 9.1. Location of racing areas will be as shown opposite.
- 9.2. The starting area is defined as a rectangle covering the area 100 meters to both windward and leeward of the starting line and 100 meters to both port and starboard of either end of the starting line.
- 9.3. Assignments of fleets to racing areas will be posted before flag D (SI 5.3) is displayed.



### 10. THE COURSE

- 10.1. The diagram in Attachment A shows the course, including the course signals, the order in which marks are to be passed and the side on which each mark is to be left.
- 10.2. No later than the warning signal, the race committee signal boat will display the approximate compass bearing of the first leg.
- 10.3. Courses will not be shortened. This changes RRS 32.
- 10.4. The course shall be signaled by placards displayed on the signal boat.

### 11. MARKS

- 11.1. Marks 1, 2s and 2p will be yellow inflatable buoys.
- 11.2. New marks as provided in SI 13.1 will be orange marks.
- 11.3. Starting marks and finishing marks will be race committee vessels.

### 12. THE START

- 12.1. The starting line will be between staffs displaying orange flags on starting marks.
- 12.2. Boats whose warning signal has not been made shall avoid the starting area during the starting sequence for other races. [DP]
- 12.3. A boat starting later than 4 minutes after her starting signal will be scored Did Not Start without a hearing. This changes RRS A4 and A5.
- 12.4. Individual and general recall flags will be displayed by both race committee starting line boats.

### 13. CHANGE OF THE NEXT LEG OF THE COURSE

- 13.1. To change the next leg of the course, the race committee will lay a new mark (or move the finishing line) and remove the original mark as soon as practicable. When in a subsequent change a new mark is replaced, it will be replaced by an original mark.

### 14. THE FINISH

The finishing line will be between staffs displaying orange flags on the finishing marks.



## 29ER US NATIONAL CHAMPIONSHIP



### 15. PENALTY SYSTEM

- 15.1. RRS 44.1 is changed so that the Two-Turns Penalty is replaced by the One-Turn Penalty.
- 15.2. Appendix P will apply as changed by SIs 15.3, 15.4 and 15.5.
- 15.3. Rule P2.1 will be changed as follows: When a boat is first penalized under rule P1 her penalty shall be a One-Turn Penalty under rule 44.2. If she fails to take it she shall be disqualified without a hearing.
- 15.4. Rule P2.2 will be changed as follows: When a boat is penalized a second or subsequent time during the regatta, her penalty shall be to promptly retire from the race. If she fails to do so she shall be disqualified without a hearing and her score shall not be excluded.
- 15.5. Rule P2.3 will not apply.

### 16. TIME LIMITS & TARGET TIMES

- 16.1. Time limits and target times are as follows:

Time limit	Mark 1 Time limit	Target time
60 minutes	15 minutes	30 minutes
- 16.2. If no boat has passed Mark 1 within the Mark 1 time limit or if no boat has finished within the Time limit the race will be abandoned. Failure to meet the target time will not be grounds for redress. This changes RRS 62.1(a).
- 16.3. Boats failing to finish within 10 minutes after the first boat sails the course and finishes will be scored Did Not Finish Time Limit Expired without a hearing. This changes RRSs 35, A4, and A5.

### 17. PROTESTS & REQUESTS FOR REDRESS

- 17.1. Protest forms are available at the protest desk located inside the main clubhouse entrance. Protests and requests for redress or reopening shall be delivered there within the appropriate time limit.
- 17.2. For each fleet, the protest time limit is 90 minutes after the last boat has finished the last race of the day, after instruction 16.3 has been applied to that race, or the race committee signals no more racing today, whichever is later.
- 17.3. Notices will be posted no later than 30 minutes after the protest time limit to inform competitors of hearings in which they are parties or named as witnesses. Hearings will be held in the main clubhouse, beginning at the time posted.
- 17.4. Notices of protests by the race committee or jury may be posted to inform boats under RRS 61.1(b).
- 17.5. A list of boats that, under SI 15.2, have been penalized for breaking RRS 42 will be posted.
- 17.6. Breaches of SIs which are annotated '[NPI]' will not be grounds for a protest by a boat. This changes rule RRS. 60.1(a). Penalties for these breaches may be less than disqualification if the jury so decides.
- 17.7. On the last scheduled day of racing a request for reopening a hearing shall be delivered:
  - a) within the protest time limit if the requesting party was informed of the decision on the previous day.
  - b) no later than 30 minutes after the requesting party was informed of the decision on that day. This changes rule 66.



## 29ER US NATIONAL CHAMPIONSHIP



- 17.8. On the last scheduled day of racing a request for redress based on a jury decision shall be delivered no later than 30 minutes after the decision was posted. This changes RRS 62.2.
- 17.9. In accordance with rule 70.5(a), decisions of the protest committee are final. US Sailing's permission has been granted. If the requirements are not met, the decisions of the protest committee may be appealed. US Sailing's permission is limited to the qualifying series. Competitors may appeal decisions of the protest committee in the final series.
- 18. ARBITRATION**
- Appendix T Arbitration applies
- 19. SCORING**
- 19.1. One race is required to be completed to constitute the Qualifying Series.
- 19.2. Two races are required to be completed to constitute the Final Series.
- 19.3. If at the end of the qualifying series some boats have more race scores than others, scores for the most recent races will be excluded so that all boats have the same number of race scores.
- 19.4. For the qualifying series, RRS A4.2 is changed so that the scores are based on the number of boats assigned to the largest fleet.
- 19.5. Except for race scores excluded under Si 19.3, a boat's regatta score will be the total of her race scores from her Final Series. If only one race from the Final Series is completed, points equal to her Qualifying Series rank will be substituted as her second race score. If there is no final series because the qualifying series is extended to Friday, a boat's regatta score will be the total of her race scores from her Qualifying Series.
- 19.6. Each Final Series fleet will be scored separately. Different final series fleets need not have completed the same number of final races. The boats in the Gold fleet will be ranked highest.
- 19.7. Series scores (apply separately to qualifying and final series):
- (a) When fewer than 5 races have been completed, a boat's series score will be the total of her race scores.
  - (b) When from 5 to 8 races have been completed, a boat's series score will be the total of her race scores excluding her worst score.
  - (c) When 9 or more races have been completed, a boat's series score will be the total of her race scores excluding her two worst scores.
- 19.8. To request correction of an alleged error in posted race or series results, a boat shall complete a scoring enquiry form available at the race office.
- 20. SAFETY REGULATIONS**
- 20.1. While afloat, competitors shall wear either a US Coast Guard-approved personal flotation device, or a flotation device that conforms to the International 29er Class Rules adequate for the conditions. [DP]
- 20.2. **Check-out and check-in:** The requirements of this instruction are specified for the safety of competitors. [DP]
- 20.2.1. Before the warning signal on the first race each day, all boats shall sail by the stern of the race committee signal boat, hail her sail number and obtain the acknowledgment of the race committee.





## 29ER US NATIONAL CHAMPIONSHIP



20.2.2. Any competitor NOT going out to the race course that day, shall notify the race office as soon as they know they will not be racing.

20.3. A boat that retires from a race shall notify the race committee as soon as possible. [DP]

20.4. Under all circumstances, coaches and other support boats are expected to assist any boat in distress. [DP]

20.5. All coach and support boats are requested to assist the rescue organization. Search and rescue instructions will be given on the course designated VHF channel. All coach and support boats are required to monitor the course designated VHF channel. [DP]

### 21. REPLACEMENT OF CREW

21.1. Substitution of competitors will not be allowed without prior written approval of the race committee. [DP]

21.2. Substitution of damaged or lost equipment will not be allowed unless approved by the race committee. Requests for substitution shall be made to the committee at the first reasonable opportunity. [DP]

### 22. EQUIPMENT & MEASUREMENT CHECKS

22.1. A boat or equipment may be inspected at any time for compliance with the class rules and sailing instructions. On the water, a boat can be instructed by a race committee equipment inspector or measurer to proceed immediately to a designated area for inspection.

22.2. Only one set of sails and one forestay may be used during the regatta.

### 23. EVENT ADVERTISING [NP]

Boats shall display the event advertising supplied by the organizing authority on both side of the forward 25% of the hull and on the forward part of each side of the boom. If this rule is broken World Sailing Regulation 20.9.2 applies. [DP]

### 24. OFFICIAL BOATS [NP]

Official boats will be marked as follows:

Race committee boats



Jury boats



### 25. SUPPORT BOATS

25.1. Support boats shall register at the race office during the registration period. All support boats will be required to comply with local legislation and event support boat regulations. [DP]

25.2. Coaches are required to complete on-site registration and pay the appropriate fee as per NoR 4.3 at the race office or online. [DP]

25.3. Support boats shall display their national letters on a flag or outboard covers. [DP]

25.4. If called upon, support boats will be required to act as rescue boats. [DP]



## 29ER US NATIONAL CHAMPIONSHIP



- 25.5. Team leaders, coaches and other on-the-water-support personnel shall stay outside areas where boats are racing from the time of the preparatory signal until all boats have finished or retired or the race committee signals a postponement, general recall or abandonment. This rule is not applicable when assisting a boat in distress. [DP]
- 25.6. Team leaders, coaches and other on-the-water-support personnel are required to carry a working VHF radio with US channels. [DP]
- 26. TRASH DISPOSAL [NP]**  
Trash may be placed aboard support and race committee boats. [DP]
- 27. BERTHING [NP]**  
Boats shall be stored overnight on a public beach in Alamitos Bay adjacent to Alamitos Bay Yacht Club. Security will be provided during the regatta. [DP]
- 28. RADIO COMMUNICATION**
- 28.1. The Race Committee will use the following VHF Channels for communication:  
Channel 68 –Course 1 Patience
- 28.2. Except in an emergency, a boat shall neither make radio transmissions while racing nor receive radio communications not available to all boats. This restriction includes mobile telephones. [DP]
- 29. PRIZES**
- 29.1. Prizes will be awarded to the top 5 teams of the Gold fleet, the top all-female team, and the highest ranking team where both helm and crew represent the United States of America– the US 29er National Champions.
- 30. DISCLAIMER OF LIABILITY**  
Competitors participate in the regatta entirely at their own risk. See RRS 4, Decision to Race. The organizing authority will not accept any liability for material damage or personal injury or death sustained in conjunction with or prior to, during, or after the regatta.
- 31. RIGHTS TO USE NAME AND LIKENESS**  
By participating in this event, competitors automatically grant to the organizing authority and the event sponsors the right, in perpetuity, to make, use, and show, at their discretion, any photography, audio and video recording, and other reproductions of them made at the venue or on the water from the time of their arrival at the venue, until their final departure, without compensation.





# 29ER US NATIONAL CHAMPIONSHIP



## Attachment A - COURSE DIAGRAM

L	COURSE: WINDWARD / LEEWARD with reaching finish
Signal:	Mark Rounding Order:
2	Start, 1, 2s/2p, 1, 2p, Finish
3	Start, 1, 2s/2p, 1, 2s/2p, 1, 2p, Finish

